



COMPANY PROFILE

INDUSTRIAL
DIVISION





Industrial Division

Engineering | Design | Building

As a design-build mechanical contractor with in-house engineering capabilities, our team can provide you with turn key mechanical design and construction services, delivered at the highest level of safety and quality. As in everything we do, safety comes first; the safety of your staff, our employees, our subcontractors, those working around us and those visiting our jobsites is our top priority.

The majority of the clients we work with have that same level of commitment to safety. A few of those clients include Land-O-Lakes, Nutro Premium Pet Foods, Cargill Industries, Monsanto, and East Penn Manufacturing. As a result of this commitment to safety, the ACI team has received national safety awards from The Associated Builders and Contractors, Masters Builders, and Comfort Systems USA.

CONSTRUCTION

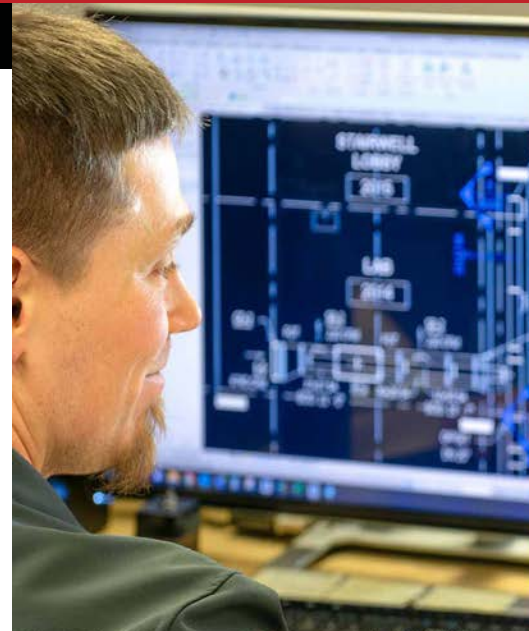
BUILDING SERVICES

MECHANICAL ENGINEERING

DESIGN ENGINEERING

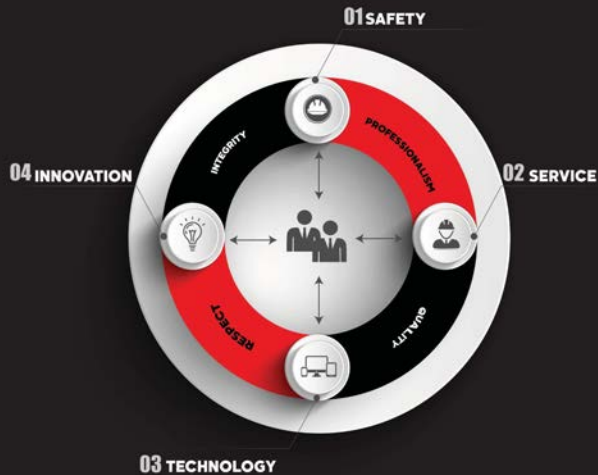
RETROFIT & REPLACEMENT

AUTOMATION



ACI Mechanical Core Values

At the heart of any great organization are the core values that we will not deviate from regardless of financial gain or overall company advancement. Here at ACI Mechanical these are the things that make up the very fabric of our company and our team members. These values are so important to us, that we review them with every new team member, regardless of their position in the company! At the heart of these values are the team members that make our company who we are today.



Todd Brunnink | Since 2023
General Manager Industrial



Todd is a seasoned industrial mechanical leader with more than 20 years managing complex HVAC and piping projects. His experience spans field operations, scheduling, budgeting, and team leadership across industrial and commercial environments. He brings deep technical expertise and a proven record delivering high-performance project execution.

Alicia Key PE | Since 2004
Lead Designer



Alicia has been a valuable member of the Team leveraging her expertise as a Project Engineer, Mechanical Engineer, and Lead Mechanical Engineer. She has actively contributed to several projects such as Coloribiotics, and Landus Soy Expeller. Additionally, she holds several licenses in eleven states, including Iowa, Arkansas, Georgia, Indiana (PE), etc.

Larry Meiners | Since 2000
Lead Estimator



Coming to ACI as a Project Manager in 2000, Larry has overseen all types of projects. His expertise has come from design-build projects with clients like Land O-Lakes, Purina, Amcor and 3M. Working closely with our engineering team, Larry has what it takes to satisfy the needs of our clients while being budget conscious.

Nick Bement | Since 2003
Estimator



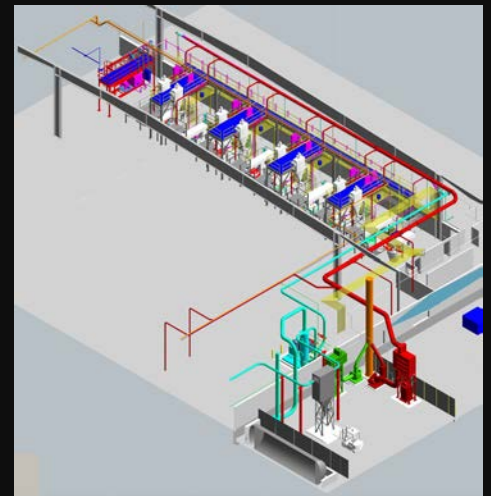
As engineering graduate from Iowa State, Nick spent his early years as an EIT focusing on design-build estimating for ACI's in-house engineering team. His knowledge of piping and plumbing systems is unmatched. Because of his background, Nick is a perfect fit for our estimating team.



Improve Collaboration

Enhanced Visualization

Increased Efficiency



We leverage innovative solutions and advanced technology resources to get your projects done on time and within budget. Our BIM team maintains a national database. This database provides a single platform for estimating, coordination, prefabrication, installation, material procurement, and labor tracking. In addition, our team provides ongoing training to all of our operating companies on a variety of tools, including:

All Autodesk Fabrication Products | Revit | Navisworks | Robotic Point Layout | 3D Scanning | HoloLens | Productivity Best Practices | Modeling and Coordination Best Practices

ACI utilizes a proprietary cloud system to host project data and construction documents, which provide real time project tracking.



WORKING EVERY DAY

SOME CURRENT PROJECT STATUS

✓ UPDATED NOVEMBER 2025

TFP COLORADO

MECHANICAL & HVAC 70%

MICHAEL FOODS EXPANSION

MECHANICAL & HVAC 85%

GRIMES BTS

MECHANICAL 90%

RCPE SOUTH DAKOTA

MECHANICAL & HVAC 50%

ISU VDL PH2

MECHANICAL & HVAC 65%

ISU HENS STORM PIPE REPAIR

MECHANICAL 55%

ISU MARTIN HALL DOM WATER PUMPS

ME... 20%

PURINA FREMONT

MECHANICAL 35%

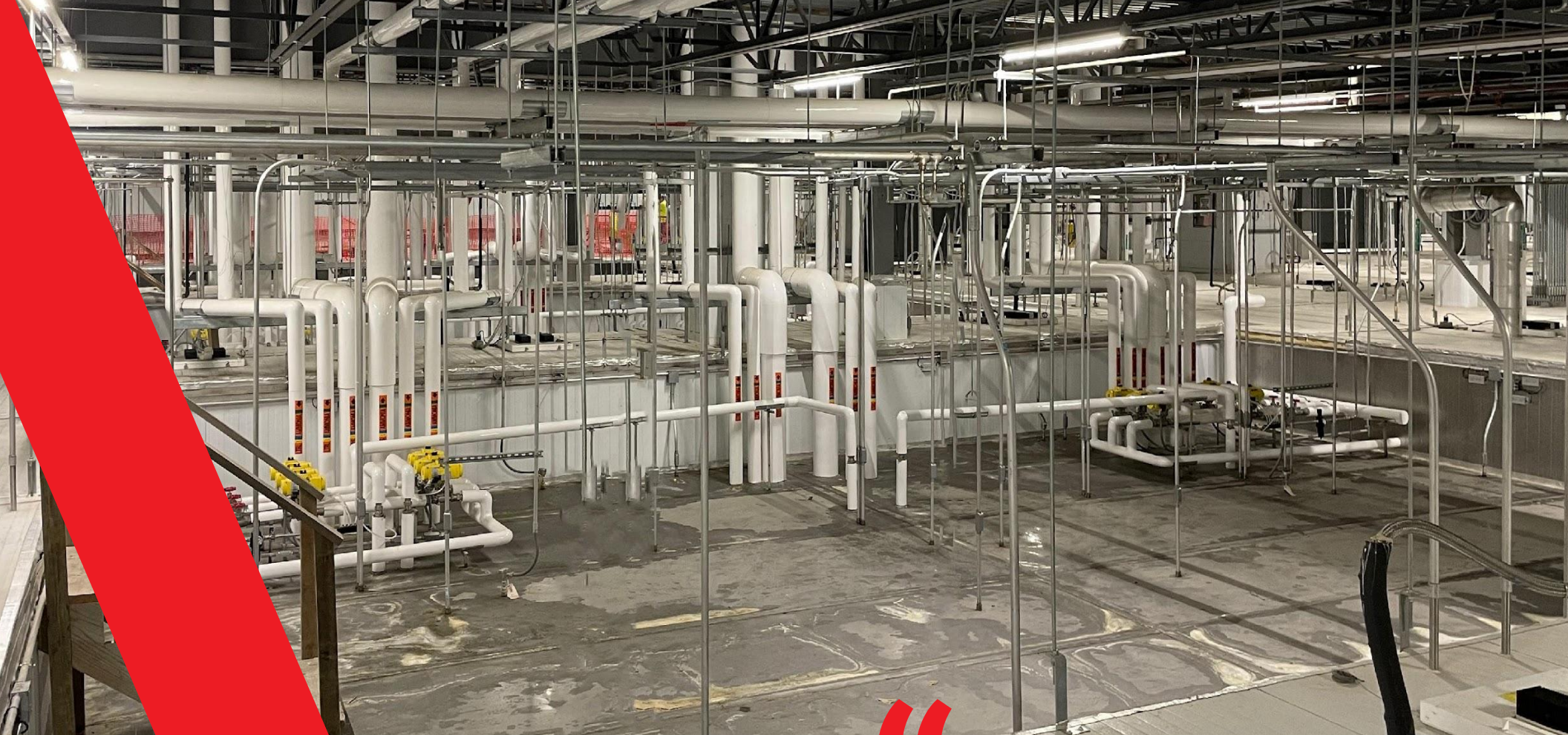
PURINA CLIFTON

MECHANICAL 70%

CEDAR RAPIDS DATA CENTER

5





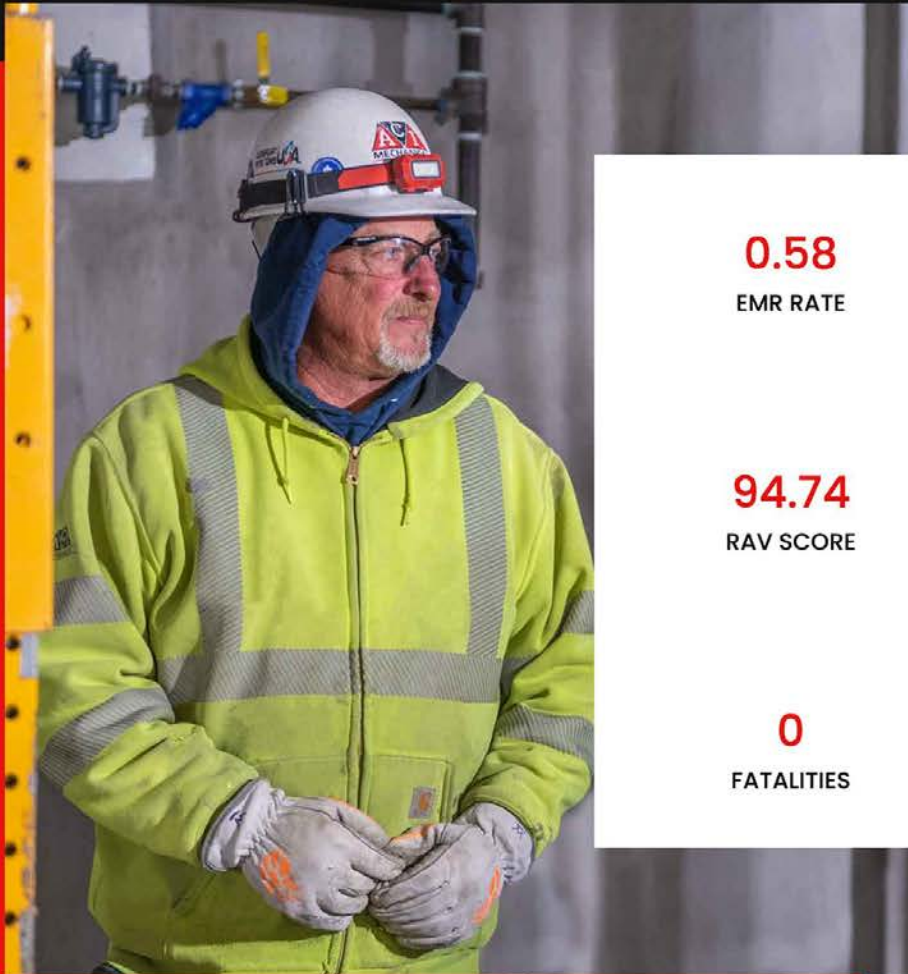
“

***Design is not just what it looks like
and feels like. Design is how it
works.”***

PROJECT: MICHAEL FOODS NORWALK

YEAR: 2019

SCOPE: Design Build of a 162,000 Sq. Ft food grade production facility. Work includes plumbing, compressed air, steam, CIP, caustic systems, and plant and welfare HVAC.



0.58

EMR RATE

94.74

RAV SCORE

0

FATALITIES

ACI MECHANICAL INC.

SAFETY

Safety is not just a word; it is our priority; at ACI, our people are our strength, which is why we maintain continuous training programs for our employees at all levels. We use risk management platforms to ensure that our employees comply with our customer's safety requirements.



Safety Training Programs



Risk Assessment

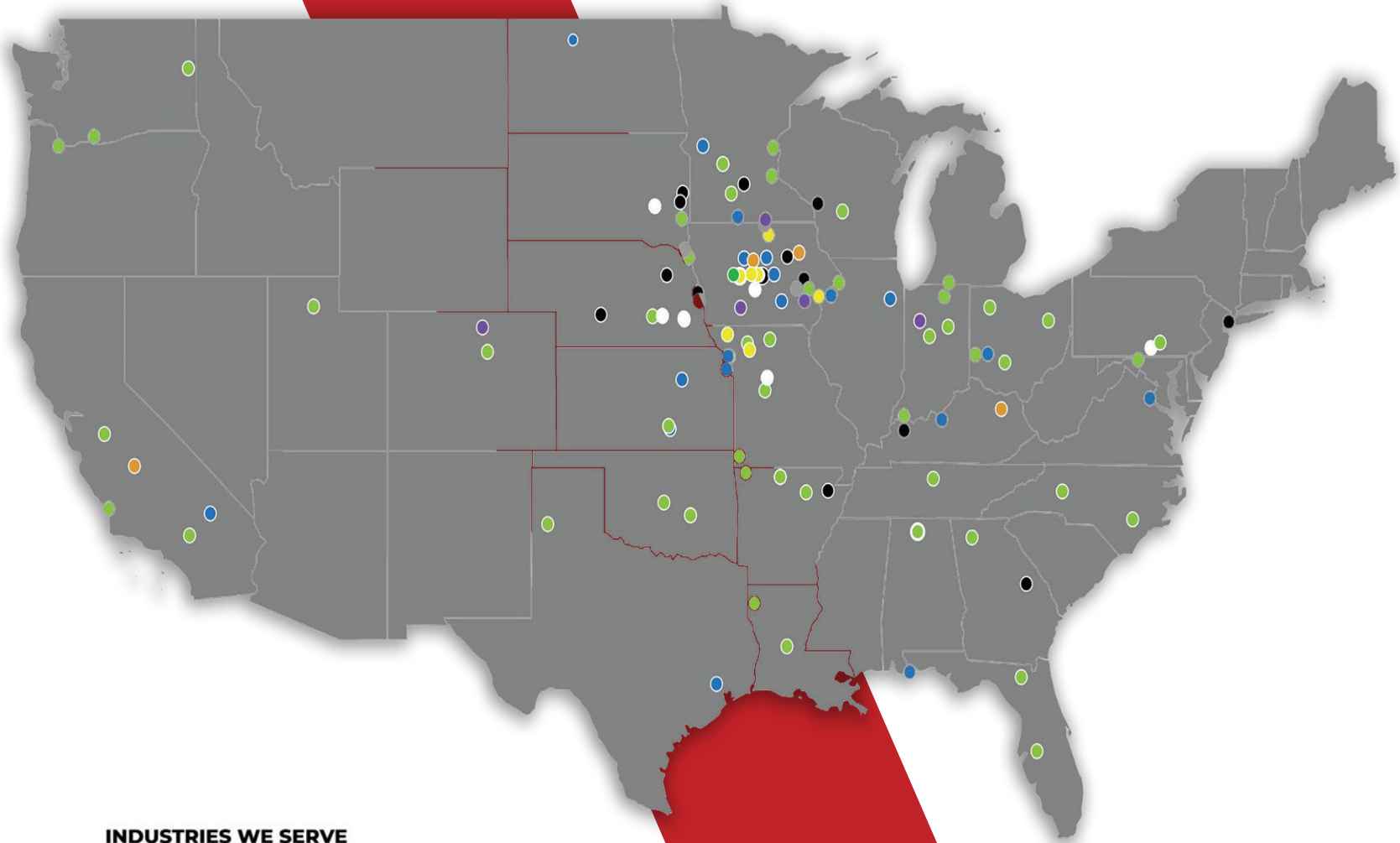


Health, Safety & Environment



OSHA Compliant

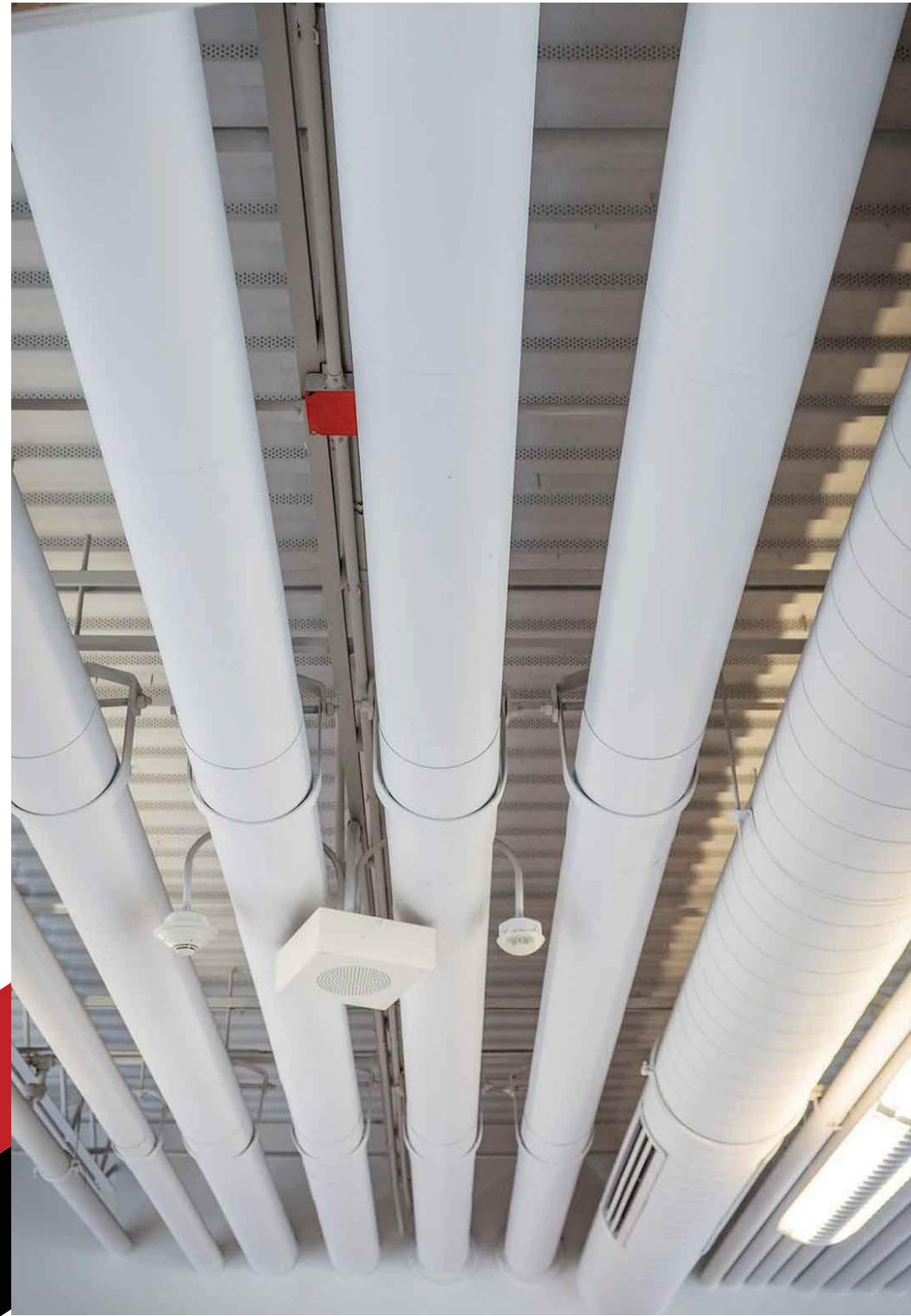




INDUSTRIES WE SERVE



Some of Our Clients



PROJECTS



Food

MICHAEL FOODS NORWALK

Design Build of a 162,000 Sq. Ft food grade production facility. Work includes plumbing, compressed air, steam, CIP, caustic systems, and plant and welfare HVAC.

Date October 2018- Sept 2019

Contract Amount \$ \$7,000,000



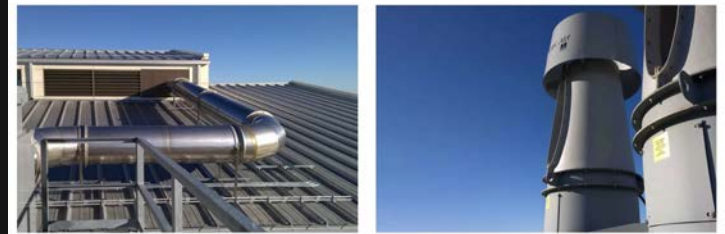
Industrial

BIOMAS FACILITY ISU

Construct a state-of-the-art facility that includes an entire temperature-controlled facility with redundant air handling systems, HEPA filter housing, and a building waste system.

Date October 2018- Sept 2019

Contract Amount \$ 15,000,000



PROJECTS



HORMEL FOODS LLC

Design assist of a new 166,150 Sq. Ft. pizza topping expansion. Work includes plumbing, compressed air, steam, CIP and caustic systems, and various process utilities, including process HVAC.

LOCATION: NEVADA, IOWA

CONTRACT AMOUNT: \$ 15,400,000



EAST PENN MANUFACTURING

Design assist of a new 345,000 Sq. Ft battery manufacturing facility. Work included: process liquids, compressed air system, manufacturing and process HVAC, and welfare plumbing/HVAC.

LOCATION: OELWEIN, IA

CONTRACT AMOUNT: \$ 11,000,000



BASF

Design-build of dry-to-liquid landscape colorant facility. Work included: process piping, dust collection, plumbing, CIP piping, production HVAC, and welfare plumbing/HVAC.

LOCATION: AMES, IOWA

CONTRACT AMOUNT: \$ 2,420,000



CONAGRA FOODS

100% Design Build Sunflower Processing Facility; our scope included engineering, process piping, plumbing, HVAC, and HVAC Controls.

LOCATION: WATERLOO, IOWA

CONTRACT AMOUNT: \$ 3,420,000



PRECISION MACHINE

Install Lennox units of 395 tons of cooling for humidity and temperature control in the 76,500 sqft, plus 27.5 tons, of cooling to 12,000 sqft.

LOCATION: STORY CITY, IOWA

CONTRACT AMOUNT: \$ 893,000



NUTRO CA

The new facility consists of two concrete slip towers with tilt-up receiving, process, and warehouse structures. Water & Venter, Steam & Condensate System NO2/CO Monitoring.

LOCATION: VICTORVILLE, CA

CONTRACT AMOUNT: \$ 3,120,000



GET IN TOUCH

ACI MECHANICAL INC.

2182 231 ST. Ln

Ames, Iowa 50014

Tel. 525-232-1236

info@acimech.com

www.acimech.com

SOCIAL MEDIA



[#linkedin.com/acimech](https://www.linkedin.com/company/acimech)



[#twitter.com/acimech](https://twitter.com/acimech)



[#instagram/acimechinc](https://www.instagram.com/acimechinc)

