



COMPANY PROFILE

COMMERCIAL
DIVISION



Commercial Division

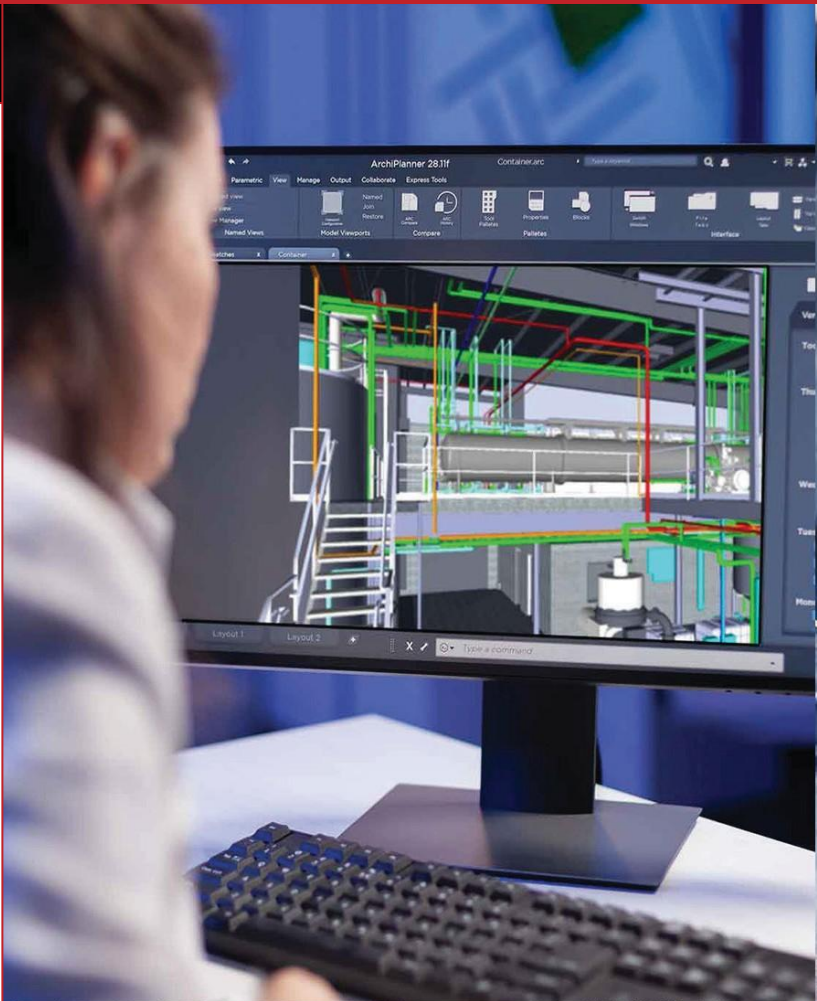
Engineering | Building | Solutions

We are a full-service, merit-shop, design-build commercial and industrial mechanical contractor. Founded in 1945, our company is built on a strong commitment to customer service, a commitment that remains at the core of everything we do. Our team of engineers, project managers, skilled welders, pipefitters, sheet metal mechanics, service technicians, and support staff are all here to serve you, our client.

As a design-build mechanical contractor with in-house engineering capabilities, our team can provide you with turn key mechanical design and construction services, delivered at the highest level of safety and quality. As in everything we do, safety comes first; the safety of your staff, our employees, our subcontractors, those working around us

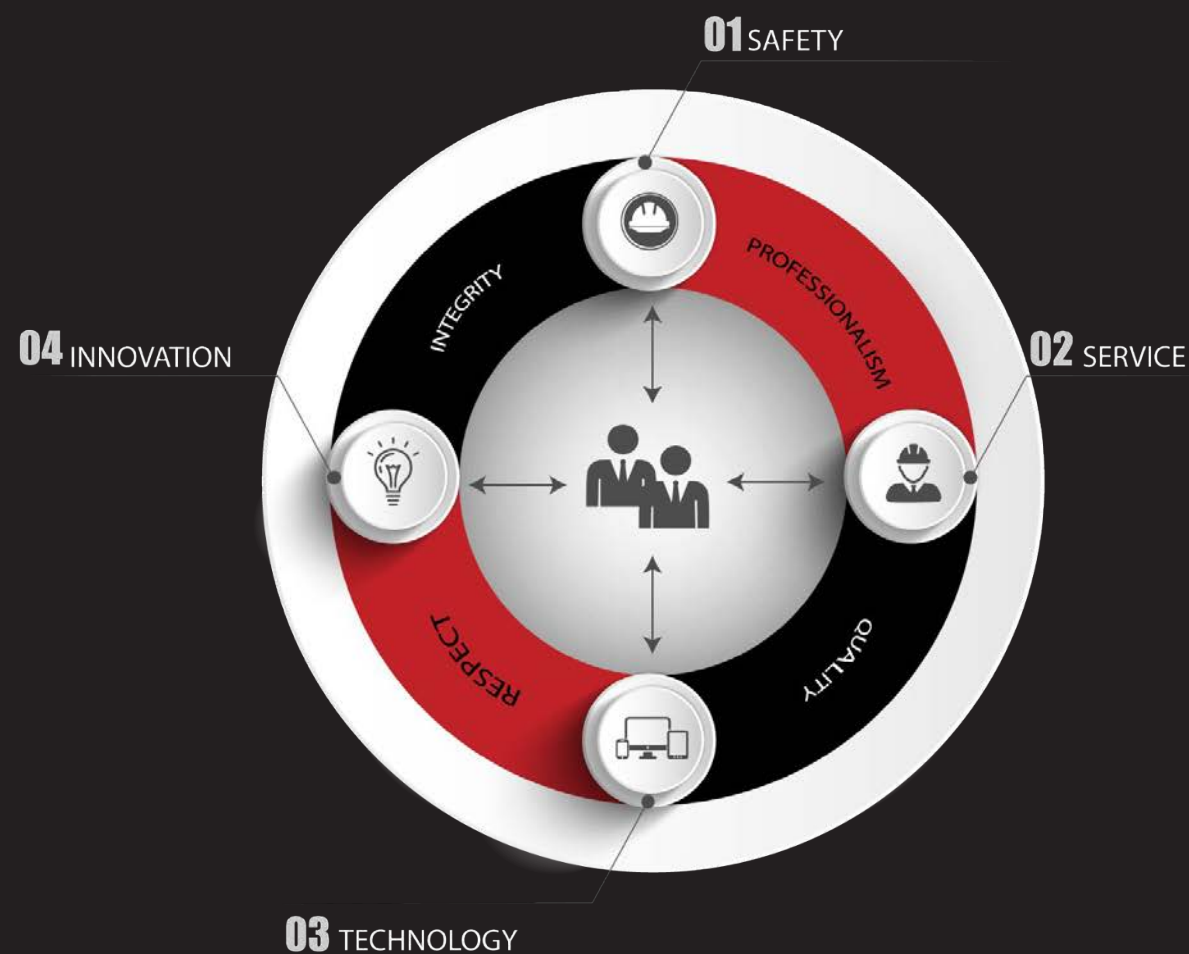
and those visiting our jobsites is our top priority. The majority of the clients we work with have that same level of commitment to safety. A few of those clients include Land-O-Lakes, Nutro Premium Pet Foods, Cargill Industries, Monsanto, and East Penn Manufacturing. As a result of this commitment to safety, the ACI team has received national safety awards from The Associated Builders and Contractors, Masters Builders, and Comfort Systems USA.

- CONSTRUCTION
- BUILDING SERVICES
- MECHANICAL ENGINEERING
- DESIGN ENGINEERING
- RETROFIT & REPLACEMENT
- AUTOMATION



ACI Mechanical Core Values

At the heart of any great organization are the core values that never change—values we do not deviate from, regardless of financial gain or company growth. Here at ACI Mechanical, these principles form the very fabric of our company and our team members. They are so important to us that we review them with every new team member, no matter their role. And at the center of these values are the people—the team members who make our company what it is today.



Shon Smith | Since 2013 General Manager Commercial

Starting his career in the field, Shon has held many roles during his tenure. That field experience has led him into his current position, and has also helped him to manage more than \$ 40 M. worth of work in the last 3 years. Currently, Shon oversees all commercial and small project work for ACI.



Larry Meiners | Since 2000 Project Manager - Estimator

Coming to ACI as a Project Manager in 2000, Larry has overseen all types of projects. His expertise has come from design-build projects with clients like Land- O-Lakes, Purina, Amcor and 3M. Working closely with our engineering team, Larry knows what it takes to satisfy the needs of our clients, while being budget conscious.



Nick Bement | Since 2003 Estimator

As engineering graduate from Iowa State, Nick spent his early years as an EIT focusing on design-build estimating for ACI's in house engineering team. His knowledge of piping and plumbing systems is unmatched. Because of his background, Nick is a perfect fit for our estimating team.



WORKING EVERY DAY

SOME CURRENT PROJECT STATUS

✓ UPDATED NOVEMBER 2025

TFP COLORADO



MICHAEL FOODS EXPANSION



GRIMES BTS



RCPE SOUTH DAKOTA



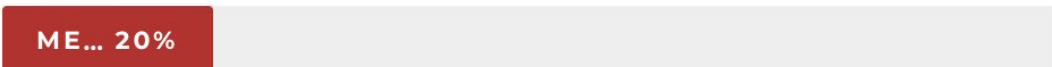
ISU VDL PH2



ISU HENS STORM PIPE REPAIR



ISU MARTIN HALL DOM WATER PUMPS



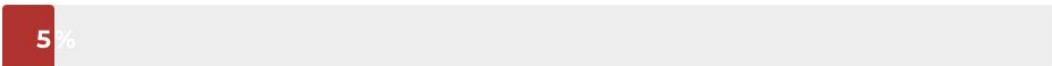
PURINA FREMONT



PURINA CLIFTON



CEDAR RAPIDS DATA CENTER





PROJECT: AMES HIGH SCHOOL

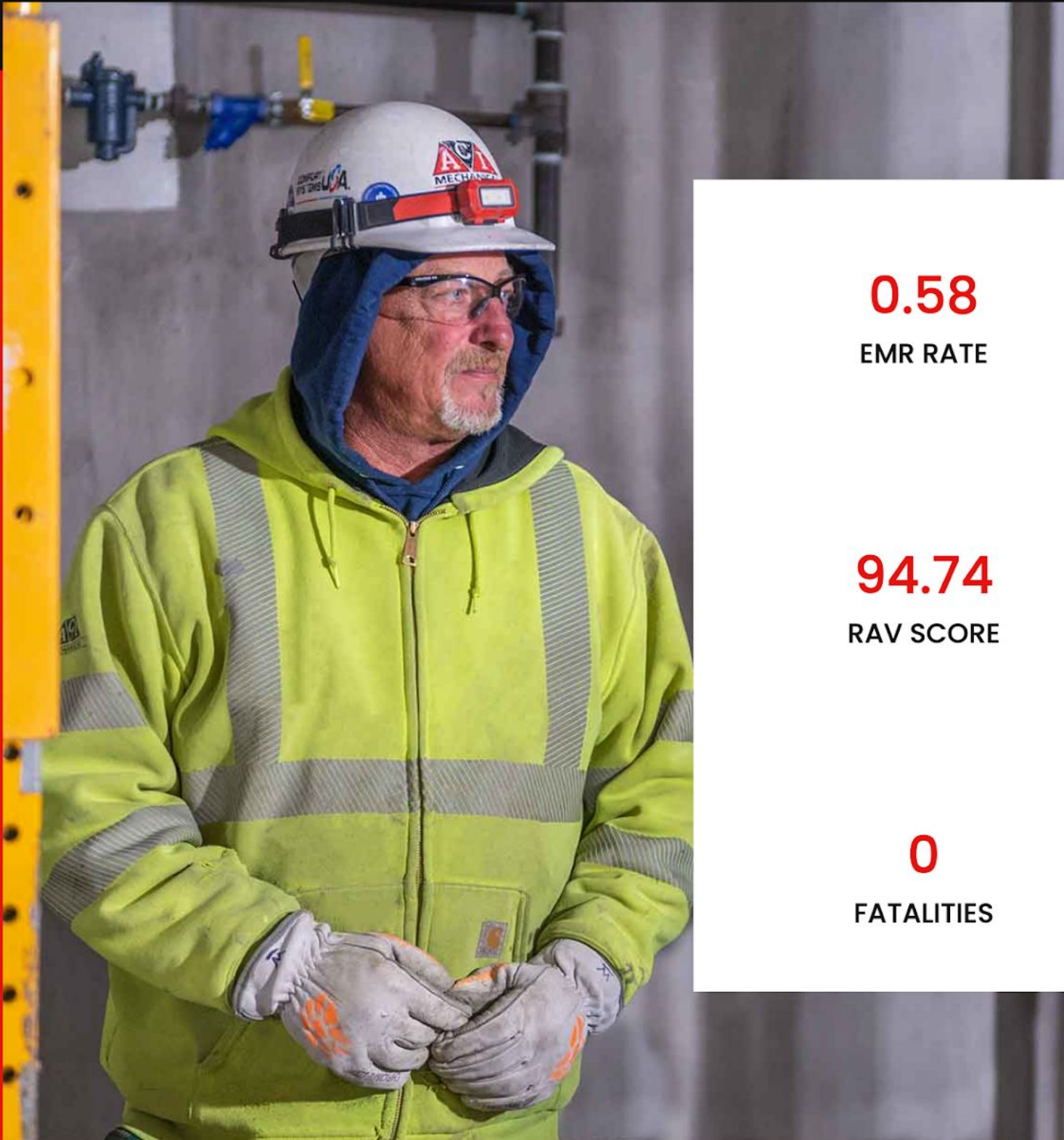
YEAR: 2019-2022

SCOPE: Over two years, 55,000 field hours, our engineers, technicians, and administrative staff completed on time and within budget. The project included the fabrication and installation of HVAC ductwork, chillers, and hydronic piping.

“

*Design is not just what it looks like
and feels like. Design is how it
works.”*

- Steve Jobs.



0.58

EMR RATE

94.74

RAV SCORE

0

FATALITIES

ACI MECHANICAL INC.

SAFETY

Safety is not just a word; it is our priority; at ACI, our people are our strength, which is why we maintain continuous training programs for our employees at all levels. We use risk management platforms to ensure that our employees comply with our customer's safety requirements.



Safety Training Programs



Risk Assessment

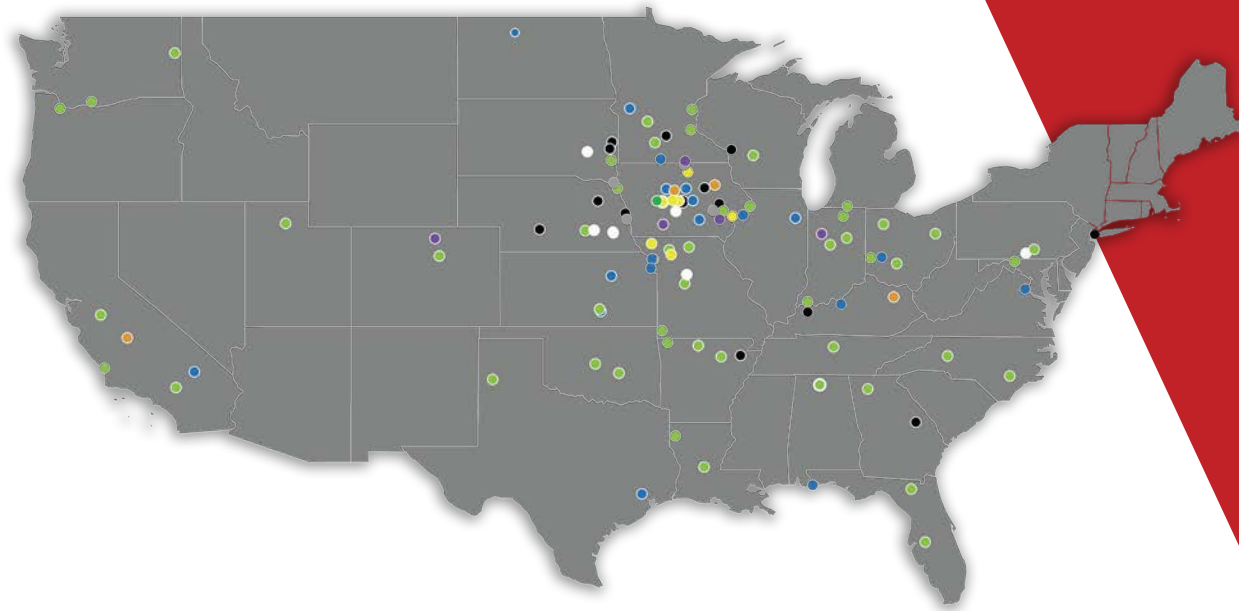


Health, Safety & Environment



OSHA Compliant





INDUSTRIES WE SERVE

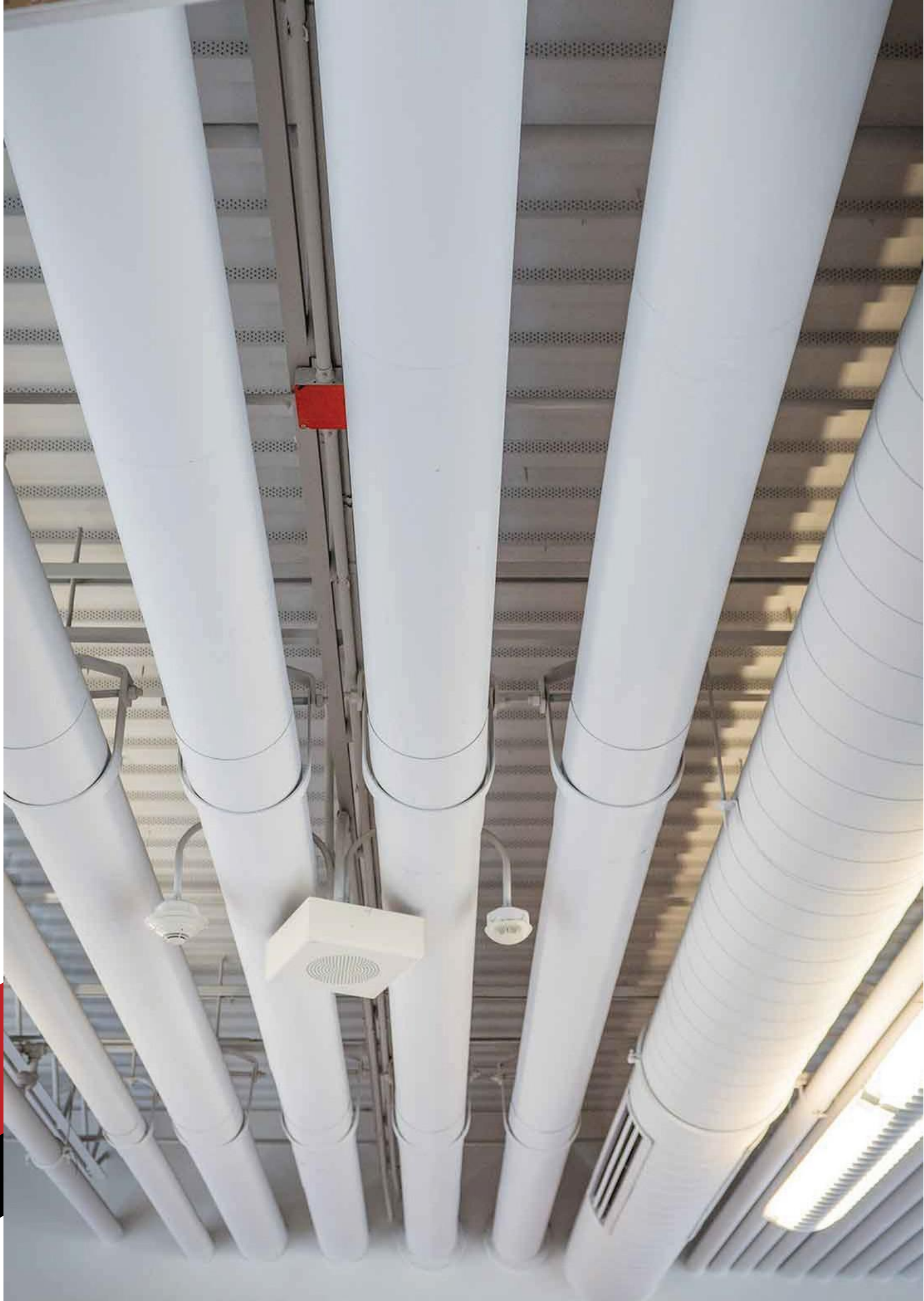


ACI clients come from all walks of life. Across the many markets we serve, we work with project specifications and parameters that span the full spectrum. Our industrial team operates border to border and coast to coast in the pet food, human food, feed mill, and COOP markets, and we have also completed numerous projects in manufacturing and energy. Our commercial team is more centralized in Iowa, yet still works across diverse markets including retail, education, healthcare, and more. Project sizes range from \$50,000 to \$20,000, and every project—regardless of size—receives our full attention to detail.

COMFORT
SYSTEMS **USA**



Some Current Clients





GET IN TOUCH

ACI MECHANICAL INC.

2182 231 ST. Ln

Ames, Iowa 50010

Tel. 525-232-1236

info@acimech.com

www.acimech.com

SOCIAL MEDIA



[#linkedin.com/acimech](https://www.linkedin.com/company/acimech)



[#twitter.com/acimech](https://twitter.com/acimech)



[#instagram/acimechinc](https://www.instagram.com/acimechinc)

